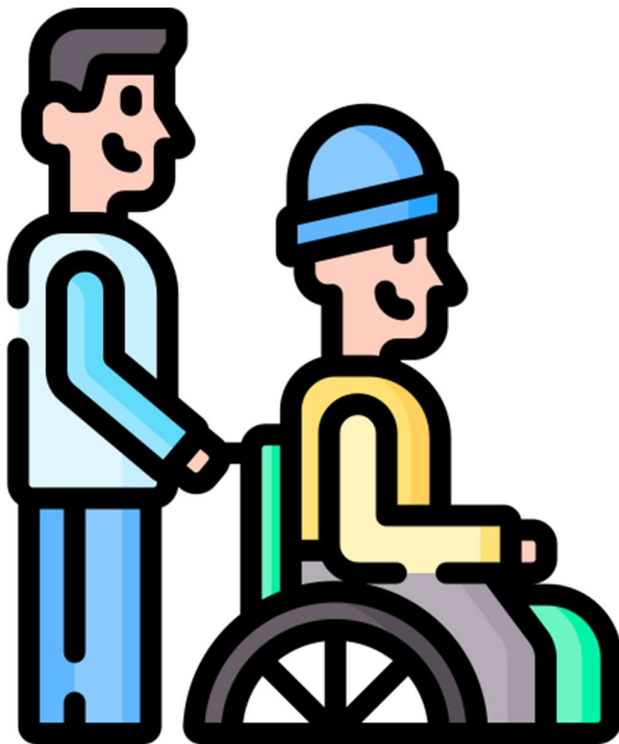




---

# Supported Independent Living

## Easy Read Version





---

## What's in this document?

About this document	<b>Page 3</b>
What is Supported Independent Living?	<b>Page 4</b>
What support can I get?	<b>Page 5</b>
How do I get Supported Independent Living?	<b>Page 7</b>
Contact us	<b>Page 8</b>

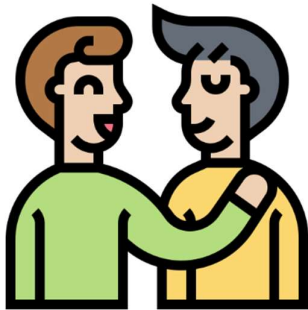


---

## About this document



This information is written in an easy read way. We use pictures to explain some ideas.



You can ask for help to read this *Supported Independent Living* booklet. A friend, family member or support person may be able to help you.

**Bold**  
Not bold

We have written some important words in **bold**, which means the letters are thicker and darker.



---

## What is Supported Independent Living?



Supported Independent Living is funded by the **NDIS**.



Supported Independent Living can be used when you:

- **Live by yourself**
- With **others** in a **share house**



You can get support **all day** and **all night** if you need it.



---

## What support can I get?

You can get support to help you with:



- Shopping



- Cleaning



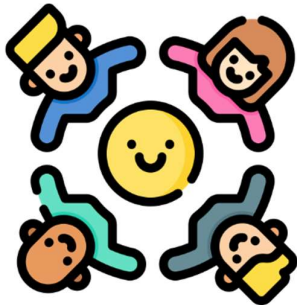
- Taking medication



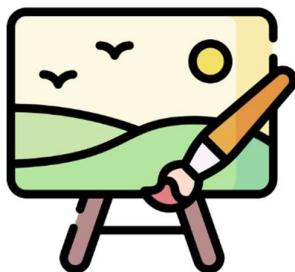
- Showering



- **Cooking meals**



- **Make friends**



Learn a new skill, like:

- **Painting**
- **Music**

- **And more.**



---

## How do I get Supported Independent Living?



To get this support you need an **NDIS plan**.



In your plan you will need funding for **'Supported Independent Living'**.



You will also need to be registered with **Housing SA**.



If you need help you can contact **Lighthouse Disability** or talk with your **support coordinator**.



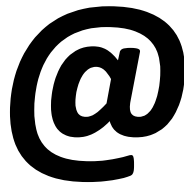
---

## Contact Us

You can contact us by:



- **telephone** – 08 8256 9800



- **email** –  
info@lighthouse disability.org.au



- **letter** – Lighthouse Disability  
PO Box 722, Salisbury SA 5108



- **online form** –  
lighthouse disability.org.au