

# Accommodation Vacancy Salisbury North



**1**  
vacancy



**4**  
bed rooms  
for clients



**2**  
bath  
rooms



✓  
wheelchair  
accessible



SDA  
funding not  
required

*Enjoy living in this spacious home  
with fully fenced back and front yards.  
Close to multiple reserves and cafes.*

**Housing Provider**



**Government of South Australia**  
Department of Human Services

☎ 1800 952 962

💻 [www.dhs.sa.gov.au/services/  
disability/accommodation-services](http://www.dhs.sa.gov.au/services/disability/accommodation-services)

**Supported Independent  
Living Provider**

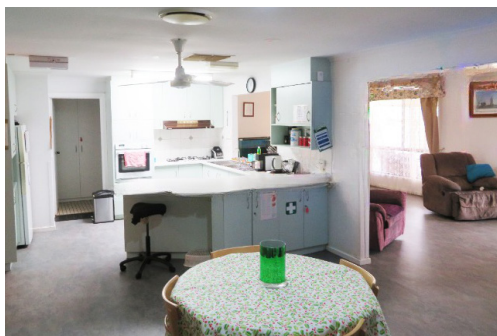


**LIGHTHOUSE  
DISABILITY**

☎ 08 8256 9800

✉ [info@lighthousedisability.org.au](mailto:info@lighthousedisability.org.au)  
💻 [www.lighthousedisability.org.au](http://www.lighthousedisability.org.au)





# Accommodation Vacancy Salisbury North



## Vacancy Details

- 24/7 support with passive overnight.
- One vacant bedroom.
- Share house with two males and one female.
- Lighthouse Disability can provide access to a fully accessible vehicle.

## Features

- Located on a quiet street.
- Four bedrooms for clients.
- Shared areas: Large open plan kitchen/dining and a living area/lounge room.
- Fish tank in the living area/lounge room.
- Large fully fenced front and backyard with shed and undercover area.
- Flat, level property ensuring easy accessibility.

## Bedroom Features

- Vinyl flooring.
- Built-in wardrobe.
- Window.
- Ceiling fan.

## Nearby Facilities

- Close to multiple reserves and a football oval
- Close to restaurants and cafes.
- Medical centre within a 5 minute drive.
- 8 minute drive to Hollywood Plaza.
- 35 minute drive to the Adelaide City Centre.

## Meet Your Housemates

We are two males aged in our 20s and 30s and one female aged in my 40s who enjoy movies, music and bowling. We are looking for a female or male housemate, who will be able to share our supports.

## Funding Information

Requires a 1:2 or 1:3 support ratio.

## Supported Independent Living (SIL)

NDIS SIL funding is required. Other appropriate funding including Lifetime Support Authority, Return to Work SA, Disability Support for Older Australians or Self-Funded may be considered.

## Specialist Disability Accommodation (SDA)

SDA funding is not required.

We will also ask that you or your support person to sign a tenancy agreement with the housing provider and a SIL service agreement with Lighthouse Disability.



**For more information about Supported Independent Living contact us:**

☎ 08 8256 9800

✉ [info@lighthousedisability.org.au](mailto:info@lighthousedisability.org.au)

💻 [lighthousedisability.org.au/sil](http://lighthousedisability.org.au/sil)