





# Support you can depend on in Salisbury

 2  1  1:1 or 1:2  High Physical Support



## Meet your housemates

This house is currently vacant, waiting for NDIS participants to make it their own. So if you have a friend who you'd like to move in with, please get in touch.

## About the house

Experience the pinnacle of modern living in this vacant state-of-the-art SDA accessible home located in the heart of Salisbury.

Discover a generously sized bedroom with a built-in robe, ceiling hoist and vinyl flooring. There is also a large window that overlooks the back garden, filling the space with natural light.

Indulge your culinary creativity in an accessible kitchen featuring height adjustable benchtops and modern appliances. From the kitchen you can easily move to the outdoor undercover

area – an inviting space to unwind, entertain, or just enjoy the fresh air.

## About the area

Benefit from the convenience of having amenities at your fingertips, with the Salisbury Community Hub and major shopping centres just a short drive away. There are also plenty of restaurants and cafes nearby for outings with friends and family.

For a full profile of the house visit [ld.org.au/salisbury](https://ld.org.au/salisbury)

## Contact us for more information

live@ld.org.au  
08 8256 9800

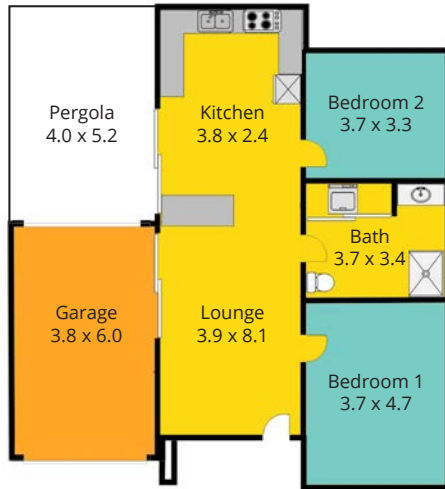


**LIGHTHOUSE  
DISABILITY**



**LIGHTHOUSE  
DISABILITY**

## Floor Plan



- Shared - 53.3m<sup>3</sup>
- Vacancy Bedroom 1 - 17.4m<sup>3</sup>
- Vacancy Bedroom 2 - 12.2m<sup>3</sup>
- Occupied/Staff Facilities

## Come home to SIL you can depend on

### Skilled & Experienced Support Workers

All our support workers are well trained, passionate and experienced to support people with a range of disabilities, meaning you will receive reliable support.

### Registered NDIS Provider

With robust quality and safeguarding systems, as well as mandatory training and screening requirements for all our staff, you can trust us to deliver a dependable support.

### Strong & Rich History

With 35 years' experience providing supported independent living, you can depend on us.

### Live in a house that feels like a home

You will really feel at home in our family-style houses. It is yours after all and you will be encouraged to make it your own.

### Person-Centred Active Support

Our support is all about doing *with* our clients, not *for* and we were pioneers of 'active support' and 'person-centred planning' in South Australia.

### Join Our Community

As our client you gain access to a range of exclusive events at no extra cost. From social gatherings to the annual Lighthouse Disability bowling championship, we offer fun activities to connect you with your community.

## What is Supported Independent Living?

Supported Independent Living (or SIL) is an NDIS support where you live individually in a house or with other people in a share house. Depending on your support needs, we have support workers available 24 hours, 7 days a week.

We will support you with daily tasks like cooking, personal care, household chores, going to appointments and taking medication. As a provider of community participation, we can also support you to engage activities, events, groups, and services within your local community.

