



**LIGHTHOUSE
DISABILITY**



Find yourself at home in **Salisbury**



Experience the pinnacle of modern living in this state-of-the-art accessible home located in the heart of Salisbury. Meticulously designed to offer both comfort and accessibility, this shared accommodation presents a unique opportunity.

Discover a generously sized vacant room that provides comfort and convenience. The bedroom features a built-in robe and elegant vinyl flooring, while a large window that overlooks the back garden, filling the space with natural light.

So why wait? If you're looking for a modern and accessible home in Salisbury, this is the perfect choice.

 2  1  1:1  High Physical Support

Meet your housemate

I am a man aged in my 40s who enjoys art and going out. I am looking for a male or female housemate, who will be able to share my home.

For a full profile of the house please visit lighthousedisability.org.au/salisbury

Contact Sharon for more information

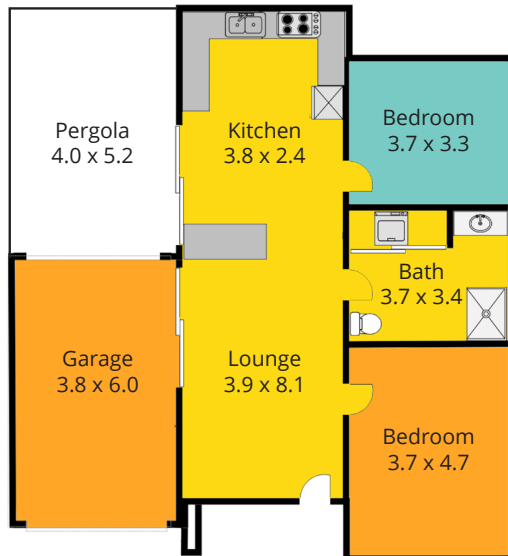


Sharon Williams
live@lighthousedisability.org.au
08 8256 9839



**LIGHTHOUSE
DISABILITY**

Floor Plan



● Shared - 53.3m³

● Vacancy - 12.2m³

● No Access

Support you can depend on

Live in a house that feels like a home

You will really feel at home in our family-style houses. You will have your own bedroom and can decorate it in your own style. Family and friends are also welcome to visit.

Skilled & Experienced Support Workers

All our support workers are well trained and experienced to support people with a range of disabilities. This includes people with high intensity needs.

Person-Centred Active Support

We engage with you to support participation in activities at home and in the community.

Strong & Rich History

We have over 30 years' experience in the sector and understand how to support people with a range of disabilities.

Quality & Safeguarding

We have quality and safeguarding systems to ensure you receive the best support.

We provide individualised and flexible support, so you can live more independently.

Supported Independent Living (or SIL) is an NDIS support where you live individually in a house or with other people in a share house. Depending on your support needs, we have support workers available 24 hours, 7 days a week.

We will support you with daily tasks like cooking, personal care, household chores, going to appointments and taking medication.

