

Accommodation Vacancy Northfield



1
vacancy



2
bed rooms
for clients



1
bath
room



✓
wheelchair
accessible

A modern and spacious home, with a reserve across the road. Close to local shops and amenities.

Housing Provider



ACCESS 2 PLACE HOUSING

☎ 08 8274 6300
✉ info@access2place.com.au
💻 access2place.com.au

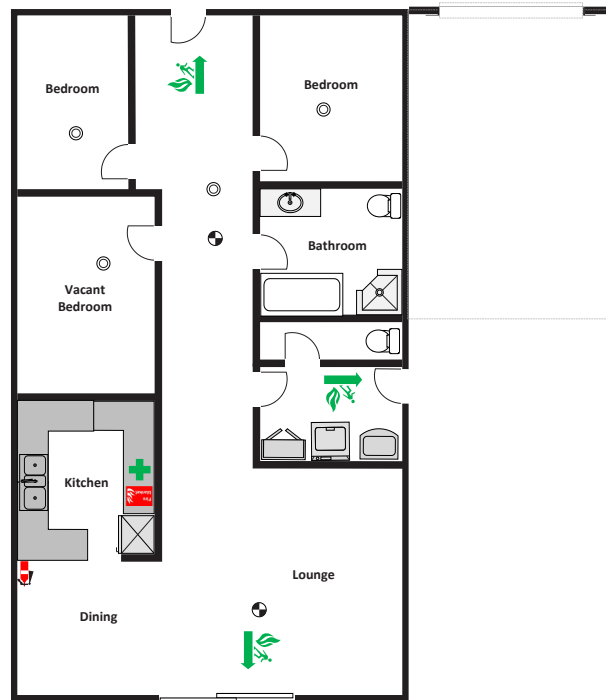
**Supported Independent
Living Provider**



**LIGHTHOUSE
DISABILITY**

☎ 08 8256 9800
✉ info@lighthouse-disability.org.au
💻 lighthouse-disability.org.au

Accommodation Vacancy Northfield



Vacancy Details

- 24/7 support with passive overnight.
- One vacant bedroom.
- Share house with one male on one side and two males on the other side.
- Lighthouse Disability provides access to a fully accessible vehicle.
- Clients also have access to the Lighthouse Disability volunteer program for additional social support.
- Lighthouse Disability carefully match clients with other people who share similar interests and goals.

Features

- Two bedrooms for clients on each side.
- Shared areas: Large accessible open plan kitchen/dining, bathroom and living area.
- Fully fenced backyard and undercover area.
- Low maintenance gardens.
- Flat, level property ensuring easy accessibility.

Bedroom Features

- Vinyl floor.
- Built-in wardrobe.
- Ducted air conditioning

Nearby Facilities

- Reserve across the road.
- Other reserves nearby.

- 2 minute drive to a medical centre.
- 10 minute drive to Northpark Shopping Centre.
- 22 minute drive to the Adelaide City Centre.

Applicant Considerations

This home is suited to males who require an accessible home. The person living at this house is one male aged in their 50s, with two males in their 50s living in the adjoining house. They enjoy sport, playing pool and going for walks. Applicants will need to be registered on the Community Housing Client Register and category 1 eligible.

NDIS Funding

To apply for this vacancy you will need to have funding for supported independent living in your NDIS plan, and to pay your share of rent and utilities. We will also ask you or your support person to sign a service agreement.



For more information about Supported Independent Living contact us:

☎ 08 8256 9800

✉ info@lighthousedisability.org.au

🌐 lighthousedisability.org.au