

Accommodation Vacancy Highbury



1
vacancy



4
bed rooms
for clients



2
bath
rooms



✓
wheelchair
accessible



SDA
funding not
required

Enjoy living in this spacious home located on a quiet, leafy cul-de-sac with multiple reserves and shops nearby.

Housing Provider



Government of South Australia
Department of Human Services

☎ 1800 952 962

💻 [www.dhs.sa.gov.au/services/
disability/accommodation-services](http://www.dhs.sa.gov.au/services/disability/accommodation-services)

**Supported Independent
Living Provider**



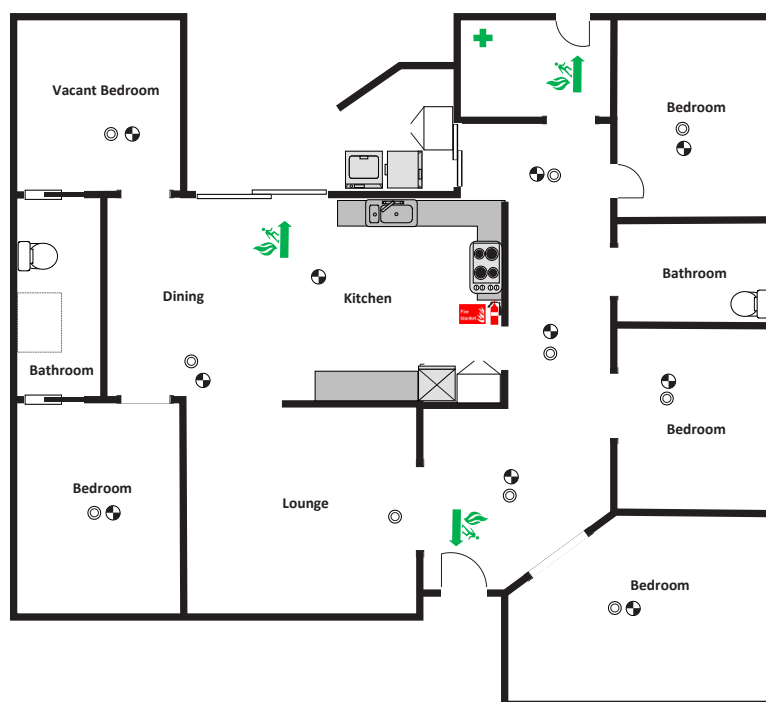
**LIGHTHOUSE
DISABILITY**

☎ 08 8256 9800

✉ info@lighthousedisability.org.au
💻 www.lighthousedisability.org.au



Accommodation Vacancy Highbury



Vacancy Details

- 24/7 support with active overnight.
- One vacant bedroom.
- Share house with three male housemates.
- Lighthouse Disability can provide access to a vehicle.

Features

- Located in a quiet, leafy cul-de-sac.
- Four bedrooms for clients.
- Shared areas: Open plan kitchen/dining, two large accessible bathrooms and one living area/lounge room.
- Fully fenced backyard and large accessible undercover area.
- Flat, level property ensuring easy accessibility.

Bedroom Features

- Wheelchair accessible/overhead hoist system.
- Vinyl floors.
- Ensuite bathroom.
- Built-in wardrobe.
- Large window overlooking outdoor area.

Nearby Facilities

- Close to multiple reserves.
- Close to public transport.
- 7 minute drive to Tea Tree Plaza.
- 30 minute drive to the Adelaide City Centre.

Meet Your Housemates

We are three males aged in our 40s and 50s who enjoy going out, movies and music. We are looking male housemates, who will be able to share our supports.

Funding Information

Requires a 1:2 support ratio.

Supported Independent Living (SIL)

NDIS SIL funding is required. Other appropriate funding including Lifetime Support Authority, Return to Work SA, Disability Support for Older Australians or Self-Funded may be considered.

Specialist Disability Accommodation (SDA)

SDA funding is not required.

We will also ask that you or your support person to sign a tenancy agreement with the housing provider and a SIL service agreement with Lighthouse Disability.



For more information about Supported Independent Living contact us:

☎ 08 8256 9800

✉ info@lighthousedisability.org.au

💻 lighthousedisability.org.au/sil