

# Accommodation Vacancy Golden Grove



**4**  
vacancies



**4**  
bed rooms  
for clients



**2**  
bath  
rooms



✓  
wheelchair  
accessible



SDA  
funding not  
required

*Spacious home surrounded by trees,  
with a stunning view of the hills. Close to  
reserves, parks and a walking trail  
right next door.*

**Housing Provider**



**Government of South Australia**  
Department of Human Services

☎ 1800 952 962

🌐 [www.dhs.sa.gov.au/services/  
disability/accommodation-services](http://www.dhs.sa.gov.au/services/disability/accommodation-services)

**Supported Independent  
Living Provider**

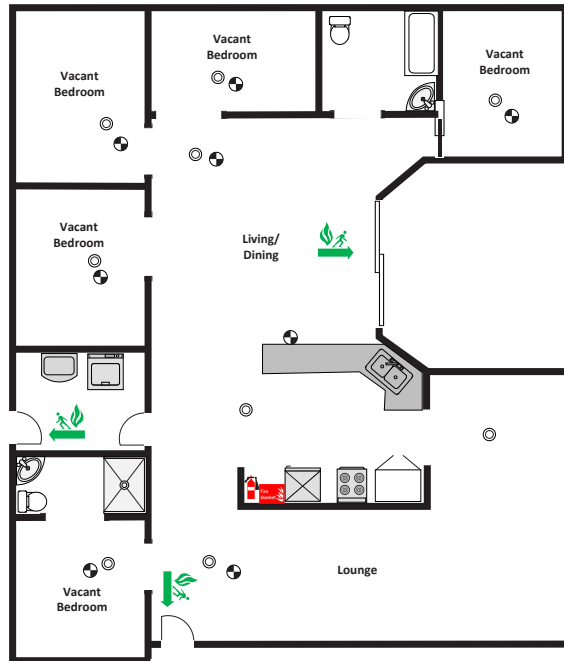


**LIGHTHOUSE  
DISABILITY**

☎ 08 8256 9800

✉ [info@lighthouse-disability.org.au](mailto:info@lighthouse-disability.org.au)  
🌐 [www.lighthouse-disability.org.au](http://www.lighthouse-disability.org.au)

# Accommodation Vacancy Golden Grove



## Vacancy Details

- 24/7 support with active overnight.
- Four vacant bedrooms.
- Lighthouse Disability provide access to a fully accessible vehicle.
- Clients also have access to the Lighthouse Disability volunteer program for additional social support.
- Lighthouse Disability carefully match clients with other people who share similar interests and goals.

## Features

- Located at the end of a quiet cul-de-sac.
- Four bedrooms for clients.
- Shared areas: Open plan kitchen/dining, two large accessible bathrooms (one ensuite) and one living area/lounge room.
- Fully fenced backyard and large accessible undercover area.
- Flat, level property ensuring easy accessibility.

## Bedroom Features

- Wheelchair accessible/overhead hoist system.
- Vinyl floors.
- Built-in wardrobe.
- Large windows.
- Bedroom one with an ensuite.

## Nearby Facilities

- Close to multiple reserves.
- Close to public transport.
- Medical centre within a 5 minute drive.
- 5 minute drive to The Grove Shopping Centre.
- 12 minute drive to Tea Tree Plaza.
- 35 minute drive to the Adelaide City Centre.

## Applicant Considerations

This home is suited to both males and females who require an accessible home and can accommodate people with a wide range of support needs. There are currently no other people living in this home.

## NDIS Funding

To apply for this vacancy you will need to have funding for supported independent living in your NDIS plans. We will also ask you or your support person to sign a service agreement.



**For more information about Supported Independent Living contact us:**

☎ 08 8256 9800

✉ [info@lighthousedisability.org.au](mailto:info@lighthousedisability.org.au)

🌐 [lighthousedisability.org.au](http://lighthousedisability.org.au)