

Accommodation Vacancy Elizabeth East



1
vacancy

4
bedrooms
for clients

2
bath
rooms

✓
wheelchair
accessible

SDA Basic
funding
preferred

*Enjoy living in this heritage listed
double brick house with an
abundance of trees and wildlife.*

Housing Provider



ACCESS 2 PLACE HOUSING

☎ 08 8274 6300
✉ info@access2place.com.au
💻 access2place.com.au

**Supported Independent
Living Provider**

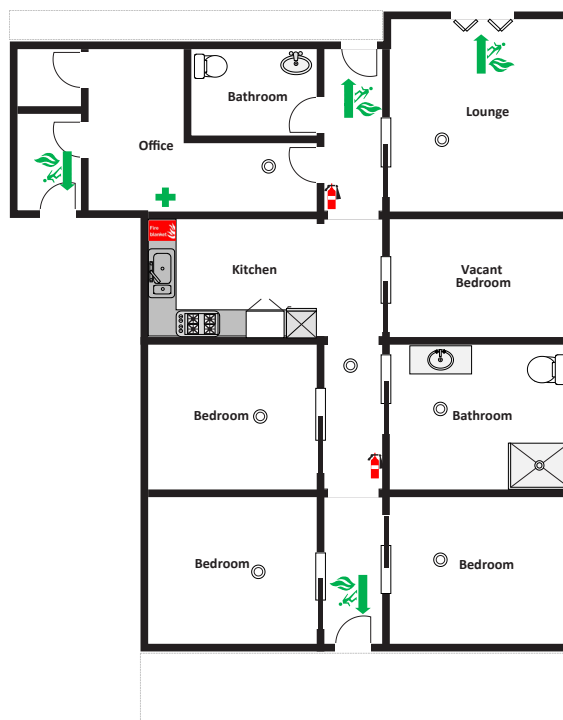


**LIGHTHOUSE
DISABILITY**

☎ 08 8256 9800
✉ info@lighthousedisability.org.au
💻 lighthousedisability.org.au



Accommodation Vacancy Elizabeth East



Vacancy Details

- 24/7 support with active overnight.
- One vacant bedroom.
- Shared house with three male housemates.
- Lighthouse Disability can provide access to a fully accessible vehicle.
- Lighthouse Disability carefully match clients with other people who share similar interests and goals.

Features

- Four bedrooms for clients.
- Heritage listed, double brick building with high ceilings.
- Shared areas: accessible large bathroom, large wheelchair friendly kitchen/dining and separate lounge/living area for family visits.
- Wheelchair accessible entry.

Bedroom Features

- Wheelchair accessible/overhead hoist system.
- Vinyl flooring.
- Built-in wardrobe.
- Window overlooking garden area.

Nearby Facilities

- Close to multiple reserves.
- 1 minute drive to a medical centre and pharmacy.
- 3 minute drive to Elizabeth City Shopping Centre.

Meet Your Housemates

We are three males aged in our 50s who enjoy going out, movies and watching television. We are looking for male housemates, who will be able to share our supports.

Funding Information

Requires a 1:2 or 1:3 support ratio.

Supported Independent Living (SIL)

NDIS SIL funding is required. Other appropriate funding including Lifetime Support Authority, Return to Work SA, Disability Support for Older Australians or Self-Funded may be considered.

Specialist Disability Accommodation (SDA)

SDA Basic funding is preferred.

We will also ask that you or your support person sign a tenancy agreement with the SDA provider and a SIL service agreement with Lighthouse Disability.



For more information about Supported Independent Living contact us:

☎ 08 8256 9800

✉ info@lighthousedisability.org.au

💻 lighthousedisability.org.au