

# Accommodation Vacancy Clearview



**1**  
vacancy



**4**  
bed rooms  
for clients



**1**  
bath  
room



✓  
wheelchair  
accessible



SDA  
funding is not  
required

*Enjoy living in this large modern house  
with a stunning backyard.*

**Housing Provider**



☎ 08 8165 5300  
✉ [admin@cornerstonehousing.com.au](mailto:admin@cornerstonehousing.com.au)  
🌐 [www.cornerstonehousing.com.au](http://www.cornerstonehousing.com.au)

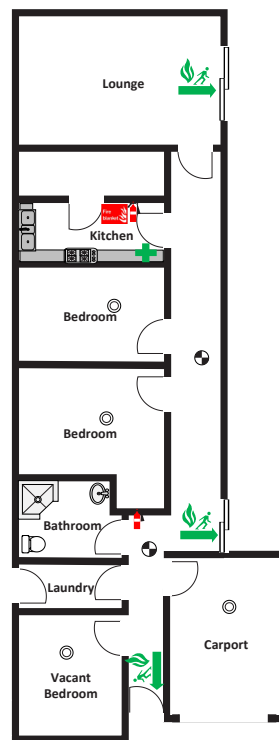
**Supported Independent  
Living Provider**



**LIGHTHOUSE  
DISABILITY**

☎ 08 8256 9800  
✉ [info@lighthouse-disability.org.au](mailto:info@lighthouse-disability.org.au)  
🌐 [www.lighthouse-disability.org.au](http://www.lighthouse-disability.org.au)

# Accommodation Vacancy Clearview



## Vacancy Details

- 24/7 support with passive night service
- One vacant bedroom
- Share house with two female and one male housemates
- House comes with fully accessible vehicle
- Clients also have access to the Lighthouse Disability volunteer program for additional social support.
- Lighthouse Disability carefully match clients with other people who share similar interests and goals.

## Features

- Three bedrooms on one side and one bedroom on the other side.
- Shared areas: Large kitchen, bathroom and living area.
- Fully fenced backyard and undercover area.
- Flat, level property ensuring easy accessibility.

## Bedroom Features

- Carpet.
- Large window overlooking the front garden.

## Nearby Facilities

- A park down the road.
- Medical centre within a 2 minute drive.

- 10 minute drive to the Northpark and Churchill Shopping Centres.
- 19 minute drive to the Adelaide City Centre.

## Applicant Considerations

This home is suited to males or females. The people living at this house are two females aged in their 20s and 30s and one male aged in their 40s. They enjoy music, board games and gardening.

Applicants will need to be registered on the Community Housing Client Register and category 1 eligible.

## NDIS Funding

To apply for this vacancy you will need to have funding for supported independent living in your NDIS plans. We will also ask you or your support person to sign a tenancy agreement with Cornerstone Housing and a Supported Independent Living service agreement with Lighthouse Disability.



For more information about Supported Independent Living contact us:

☎ 08 8256 9800

✉ [info@lighthousedisability.org.au](mailto:info@lighthousedisability.org.au)

🌐 [lighthousedisability.org.au](http://lighthousedisability.org.au)