

Accommodation Vacancy Elizabeth East



1
vacancy



4
bed rooms
for clients



2
bath
rooms



✓
wheelchair
accessible

*Enjoy living in this heritage listed
double brick house, with an
abundance of trees and wildlife.*

Housing Provider



ACCESS 2 PLACE HOUSING

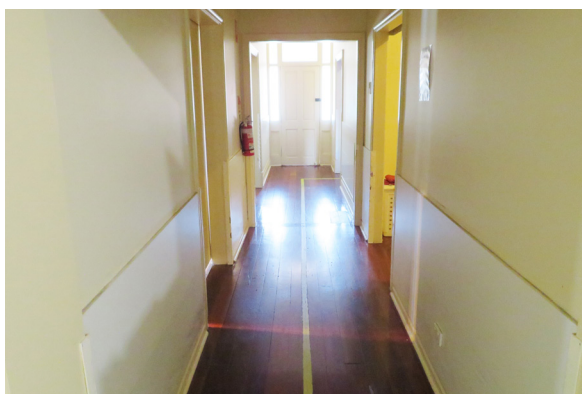
☎ 08 8274 6300
✉ info@access2place.com.au
💻 access2place.com.au

**Supported Independent
Living Provider**



**LIGHTHOUSE
DISABILITY**

☎ 08 8256 9800
✉ info@lighthouse-disability.org.au
💻 lighthouse-disability.org.au



Accommodation Vacancy Elizabeth East

Vacancy Details

- 24/7 support with active overnight.
- Share house with three male housemates.
- Lighthouse Disability provides access to a vehicle.
- Clients also have access to the Lighthouse Disability volunteer program for additional social support.

Features

- House is surrounded by trees abundant with birds and wildlife.
- Four bedrooms for clients.
- Heritage listed, double brick building with high ceilings.
- Shared areas: accessible large bathroom, large wheelchair friendly kitchen/dining and separate lounge/living area for family visits and a outdoor barbecue area.
- Wheelchair accessible entry.

Bedroom Features

- Wheelchair accessible/overhead hoist system.
- Polished timber floor boards.
- Built-in wardrobe.
- Window with security screen - overlooking garden area.

Nearby Facilities

- Close to multiple reserves and the Midway Community Centre.
- Friendly local shops.
- 1 minute drive to a medical centre and pharmacy.
- 3 minute drive to Elizabeth City Shopping Centre with Centrelink, Service SA, Playford Council, Civic Centre and the Grenville Hub.

Applicant Considerations

This home is suited to males in their 40s or 50s who require an accessible home. The people currently living at this home are two males aged in their 50s. They enjoy going out, movies and watching television.

NDIS Funding

To apply for this vacancy you will need to have funding for supported independent living in your NDIS plan. We will also ask you or your support person to sign a service agreement.



For more information about Supported Independent Living or to book a viewing:

☎ 08 8256 9800

✉ info@lighthousedisability.org.au

💻 lighthousedisability.org.au